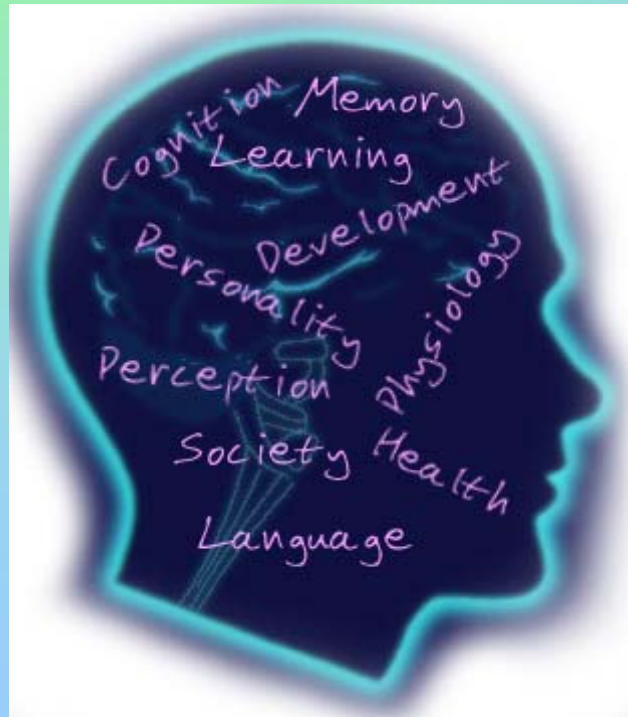


PSYCHOLOGY



What is Psychology?

The scientific study of the human brain and behaviour



Why study it?

“**Psychology** is among the most popular academic programs, both at Ripley and nationwide. The reasons are simple: It’s a wide ranging field that explores one of the world’s most fascinating subjects - behaviour and mental processes. It’s also a preparatory pre-professional area with countless potential career opportunities.”

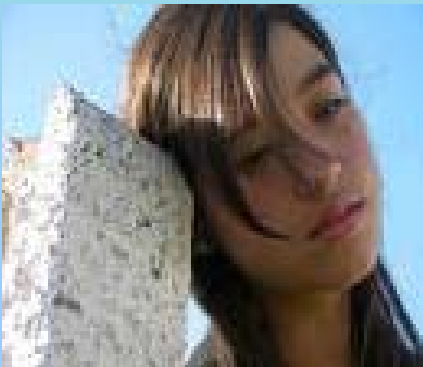
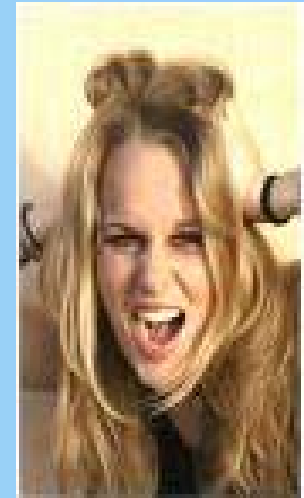
What do we study?

- Cognitive Psychology – Memory, Eyewitness testimony and improving memory.
- Developmental Psychology – attachment in children and day care.
- Research methods – scientific methods of testing psychological theories



What do we study?

- Biological Psychology – stress, its effects and methods of treatment.
- Social Psychology – obedience and conformity.
- Individual differences – abnormal behaviour, treatment and implications.



Where will it lead?

- Anywhere and everywhere!!
- Accepted as a science for degrees
- Specialize in the field of Psychology
- Excellent for CV and careers as a people-based subject



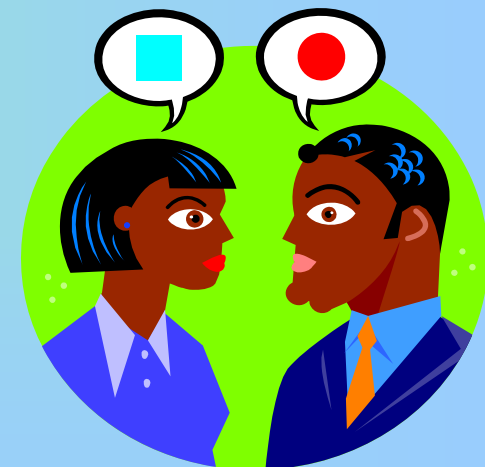
Psychology is in the Social Science 'String'

This means it goes very well with any other string and a wide variety of subjects.

Popular choices include Sciences and Psychology for medicine; English, History and Psychology for law; as a fourth subject for teaching.....

What will we do?

- Work individually and in groups
- Conduct psychological research
- Debate and argue!
- Read, read, read.....



Assessment

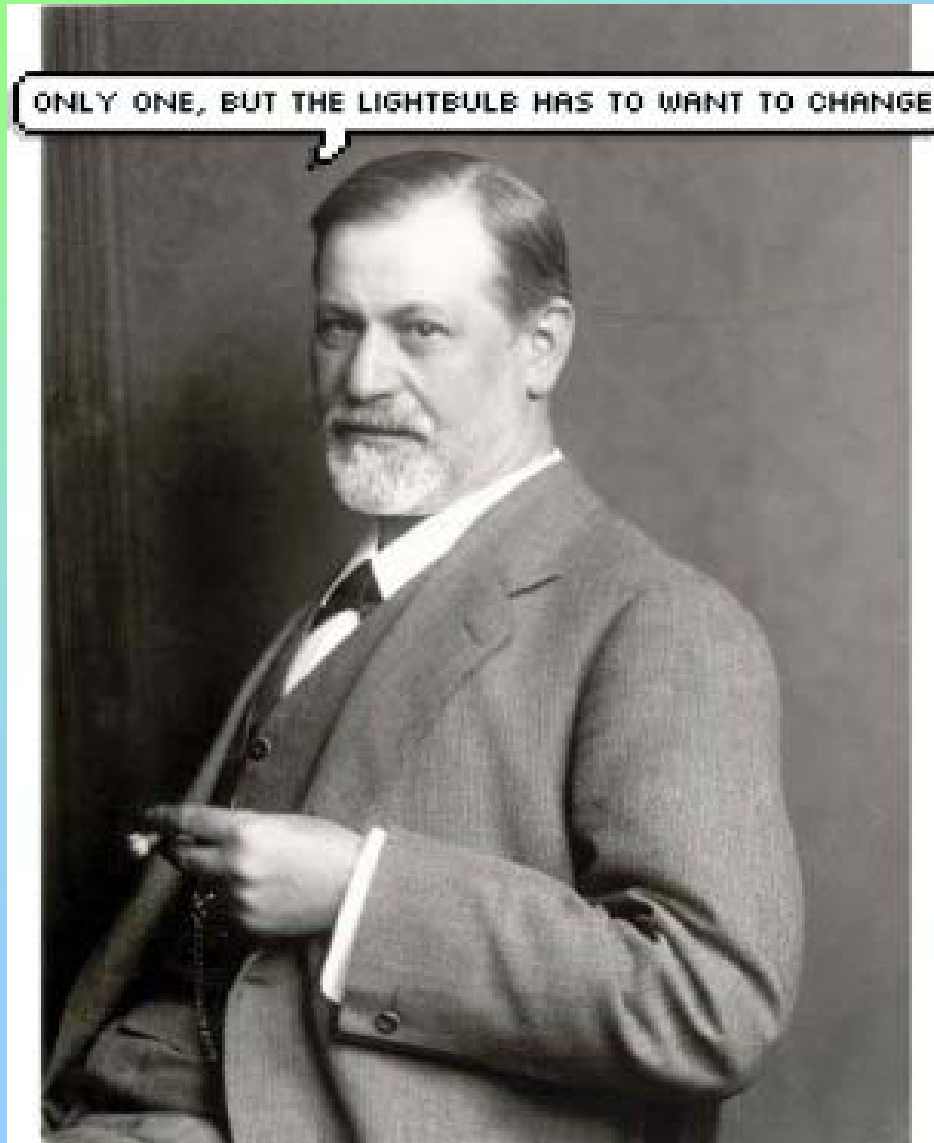
- All exam based – NO COURSEWORK
- Shorter questions at AS; essay questions at A2
- Modules in January and May

What do I need?

- Alongside the basic entry requirements for Sixth Form...
- Grade B in English Language
- And BB in Science



Please talk to one of our current AS students to find out more!!



ONLY ONE, BUT THE LIGHTBULB HAS TO WANT TO CHANGE